



## Diversity Statistics July 2023



## CONTENTS

<b>1.</b>	Gender	3
<b>2.</b>	Ethnic Minority	3
<b>3.</b>	Age	4
<b>4.</b>	Disability	5
<b>5.</b>	Socio-Economic Background	6
<b>6.</b>	Caring Responsibilities	7

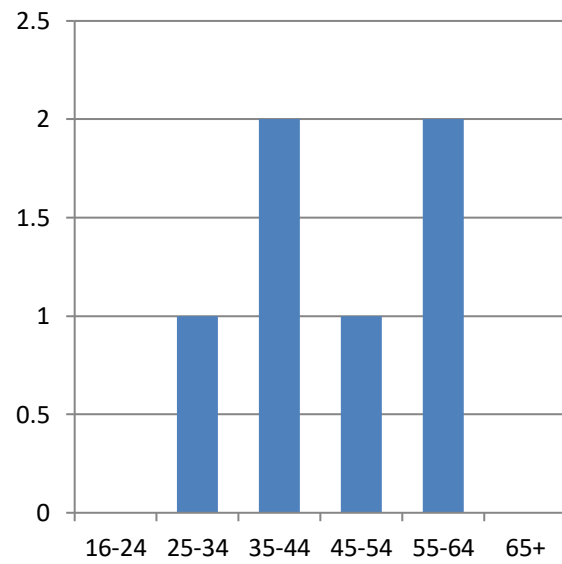
## GENDER

	MALE	FEMALE
Directors	16.66%	0%
Solicitors	50%	0%
Legal Executives	16.66%	0%
Trainee	0%	0%
Non-Legal	0%	16.66%

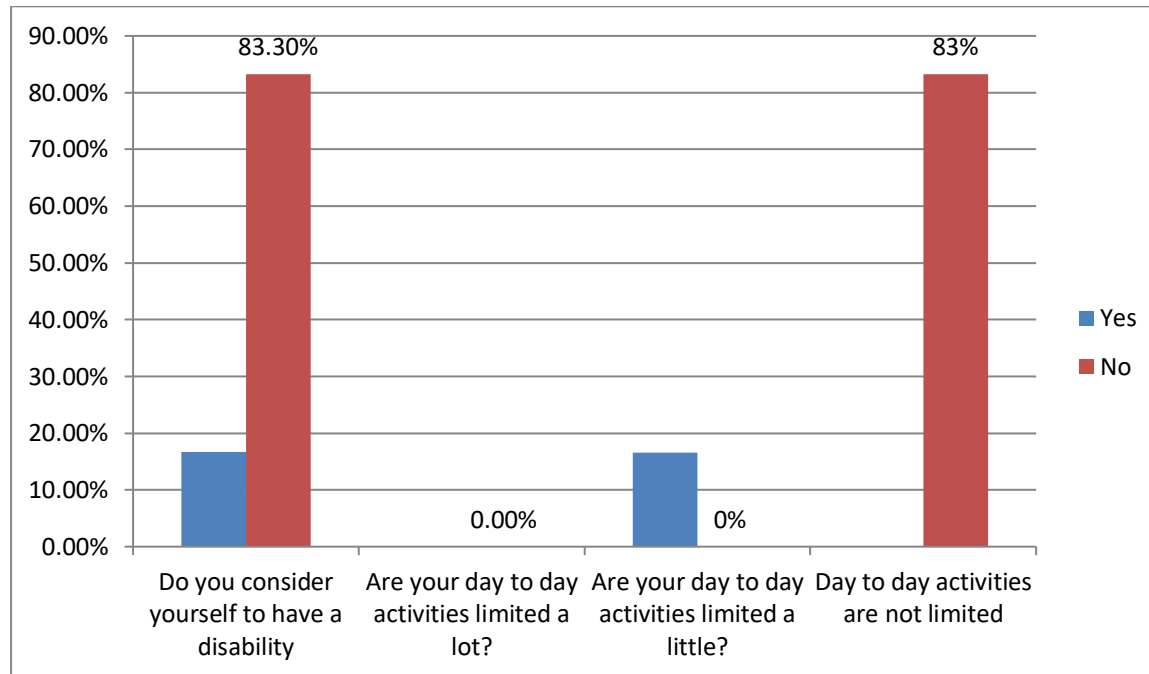
## ETHNIC MINORITY

	ASIAN/ASIAN BRITISH	BLACK OR BLACK BRITISH	MIXED OR MULTIPLE ETHNIC	WHITE	OTHER	UNKNOWN
Directors	0%	0%	0%	16.66%	0%	0%
Solicitors	0%	0%	0%	50%	0%	0%
Legal Executives	0%	0%	0%	16.66%	0%	0%
Trainee	0%	0%	0%	0%	0%	0%
Non-Legal	0%	0%	0%	16.66%	0%	0%

## AGE



## DISABILITY



## Socio-Economic Background

### Type of School Attended

	UK State School	UK Independent/Fee-Paying School	Attended School Outside of UK	Unknown
Directors	0%	16.66%	0%	0.00%
Solicitors	33.3%	0%	0%	16.66%
Legal Executives	16.66%	0%	0%	0%
Trainee	0%	0%	0%	0%
Non-Legal	16.66%	0%	0%	0%

### First Generation of Immediate Family to go to University

	Yes	No	Did Not Attend University	Unknown
Directors	16.66%	0%	0%	0%
Solicitors	33.3%	0%	0%	16.66%
Legal Executives	0%	0%	16.66%	0%
Trainee	0%	0%	0%	0%
Non-Legal	0%	0%	16.66%	0%

## Caring Responsibilities

Are you a Primary Carer of a Child or Children Under 18?

	Yes	No	Unknown
Directors	0%	16.66%	0%
Solicitors	0%	50%	0%
Legal Executives	0%	16.66%	0%
Trainees	0%	0%	0%
Non-Legal	0%	16.66%	0%

Do you Help/Support Family Members, Friends or Others due to Long-Term Illness, Ill-Health, Disability and/or Other Problems?

	Yes, 1-19 Hrs Per Wk	Yes, 20-49 Hrs Per Wk	Yes, 50 or More Hours Per Wk	No	Unknown
Directors	16.66%	0%	0%	0%	0%
Solicitors	0%	0%	0%	50%	0%
Legal Executive	16.66%	0%	0%	0%	0%
Trainee Solicitors	0%	0%	0%	0%	0%
Non-Legal	16.66%	0%	0%	0%	0%

Notes:

1. Data current as at June 2023.
2. Data has been rounded to the nearest percent.
3. For the purpose of reporting, “unknown” incorporates where respondents have either preferred not to say or have not responded.